



FAQ's – ClinCheck Pro with 3D Controls.

1). Q: Can ClinCheck Pro be used for all Invisalign treatment options?

A: Yes. ClinCheck Pro can be used for all Invisalign treatment options, including Invisalign® Full, Invisalign® Teen, Invisalign® Lite and Invisalign® i7.

2). Q: Can I have both ClinCheck 3.1 and ClinCheck Pro on my computer at the same time?

A: No. ClinCheck 3.1 will automatically uninstall when you install ClinCheck Pro. Please note that ClinCheck Pro retains and augments all functionalities already present in ClinCheck 3.1.

3). Q: Will ClinCheck 3.1 continue to be updated?

A: No. ClinCheck 3.1 will not be updated to support new clinical innovations. ClinCheck Pro with 3D Controls is the latest software innovation from Align, is intended to replace ClinCheck 3.1, and will be subsequently updated to support future Invisalign innovations.

4). Q: What are the minimum system requirements for ClinCheck Pro?

A: We recommend installing ClinCheck Pro software on your fastest PC computer to avoid any potential latency lag in software performance. The minimum system requirements for the ClinCheck Pro are:

Minimum hardware requirements:

- Intel® Core™ i5, 4 GB RAM, 2 GB free disk space.
- Graphics card: Intel HD Graphics 2000 or equivalent.
- Latest graphic card driver.

Recommended hardware requirements:

- Intel® Core™ i7, 8 GB RAM, 2 GB free disk space.
- Graphics card: NVIDIA NVS 3100M or better.
- Latest graphic card driver.

Supported Operating systems:

Windows 7 or higher. Please be aware that, if you have Windows XP as the operating system on your computer, the experience may not be optimal, especially when using the 3D controls palette. Moreover, Windows XP is no longer supported by Microsoft, potentially exposing your computer to security risks and overall performance issues. We recommend upgrading your computer to match at least the minimum requirement stated above for ClinCheck Pro (Windows 7).

Supported Browsers:

Internet Explorer 8 or higher, Chrome and FireFox. The first time ClinCheck Pro is launched you will see a message box asking you if you are OK to launch the ClinCheck Pro application with the option “don’t show again”.

5). Q: Is it possible to modify the staging of tooth movements using ClinCheck Pro?

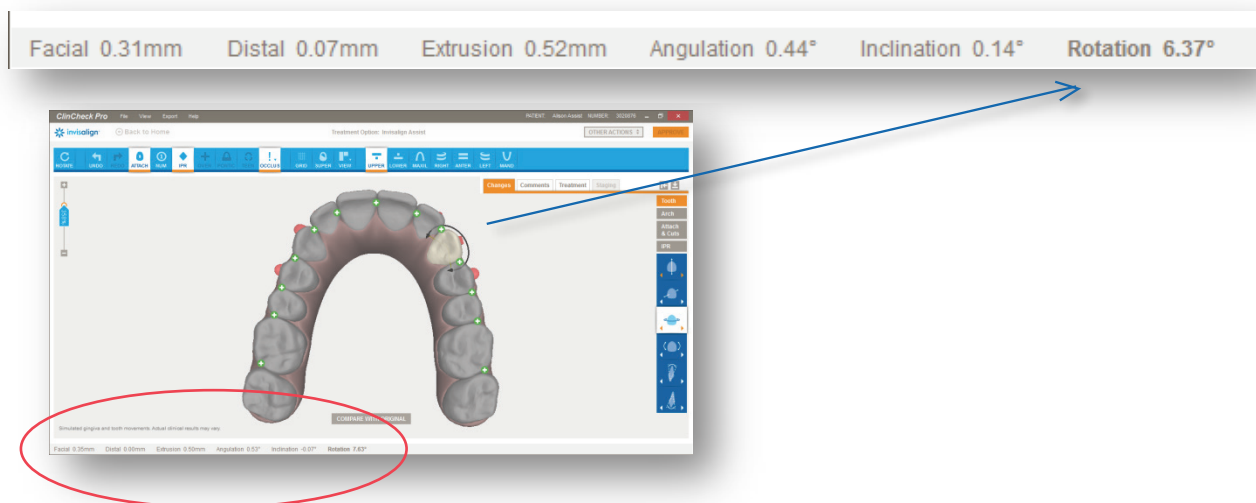
A: No. ClinCheck Pro only allows you to modify the final tooth position, attachments/precision cuts, arch width, IPR, and spacing. However, just as you do today, you can request modifications to the staging of tooth movements by writing text instructions in the Comments box. It is always possible to combine both written comments and 3D modifications.

6). Q: Is there a way to set ClinCheck Pro to predictable movements only?

A: When you use ClinCheck Pro to make adjustments to the final tooth position and send changes back to Align, a new ClinCheck treatment plan will be posted that will include an updated Tooth Movement Assessment (PDF). This Tooth Movement Assessment (PDF) is not updated when you adjust the final tooth position.

7). Q: In ClinCheck Pro, how is tooth movement measured?

A: When a tooth on the 3D model is highlighted, ClinCheck Pro will provide quantitative tooth movement values in millimeters or degrees. These values appear at the bottom of the ClinCheck Pro window, with the movement selected in bold.



These measurements reflect how much movement is built into the final position you have requested, and if you make any tooth adjustments, the values will change to reflect the total movement now programmed for that tooth.

Note: Tooth movement values are calculated from the original position of the tooth.

When making 3D modifications, each time you click on an arrow an amount of action is added based on the zoom magnification selected; the higher the magnification, the smaller the increment of change for better fine-tuning of the change. As a general rule, one arrow click adds an amount of movement of either 0.1mm or 1 degree depending on the nature of the movement.

8). Q: What happens if a new final position cannot be performed with Invisalign Lite or Invisalign i7?

A: If your changes exceeded the limitations of the current treatment option choice, the technician will create a ‘partial’ Invisalign® Lite or Invisalign® i7 setup and inform you about any limitations via comments. You have the option to accept the partial setup, to continue with Invisalign Lite or Invisalign i7 by removing the changes, or to upgrade to Invisalign® Full or Invisalign® Teen (if an Invisalign Lite) or Invisalign Full, Teen or Lite (if an Invisalign i7).

9). Q: Are there any limitations on placing conventional attachments?

A: No, there are no limitations on placing conventional attachments. You can remove all attachments and place conventional attachments anywhere on any tooth. ClinCheck Pro shows the actual attachment size and position on the 3D model, so you can see potential conflicts with gingiva or Precision Cuts. Once you submit your changes, the treatment plan will be updated to reflect your modifications and resolve any conflicts.

10). Q: Why was the final position changed by the technician? I left the posterior occlusion very tight.

A: When making 3D adjustments to a ClinCheck treatment plan, heavy inter-arch collisions may be created as a result of these adjustments. You may remove heavy occlusal contacts using the Occlusal Contacts feature, but this is optional. If you have not removed them, Align Technology's technician will remove them for you. If you intend to keep heavy occlusal contacts, place a text comment instructing the technician not to remove heavy occlusal contacts on specific teeth.

11). Q: Can I save my final position for the next modification if needed? Can I use it again?

A: As long as you have not submitted your modifications, they will be preserved. You will be able to view and continue editing these modifications during your next session. If you've changed your mind, you can start over by clicking the Reset button.

12). Q: Where can I see if my modifications are blue or black movements?

A: When you use ClinCheck Pro to make adjustments to the final tooth position and send changes back to Align, a new ClinCheck treatment plan will be posted that will include an updated Tooth Movement Assessment (PDF), where you will see if the resulting movements are blue or black. At this time, the Tooth Movement Assessment (PDF) is not updated when you adjust the final tooth position.

When the 3D Controls are switched on, you can also assess the impact of your adjustments on the movements' difficulty by enabling the Tooth Movement Assessment tool. The Tooth Movement Assessment tool will update in real time when you adjust the final tooth position.

13). Q: Can I combine 3D adjustments with text comments?

A: Yes. ClinCheck Pro with 3D Controls allows you to modify the final tooth position, attachments, Precision Cuts, arch width, IPR and spacing yourself. All other modifications can be requested via text comments.

14). Q: Why does the 3D model seem to change when I turn on the Grid tool?

A: This is due to the fact that the image is changing from a perspective projection to an orthogonal projection, which allows more accurate measurements to be made on any point of the jaw, regardless of how near or far from the grid.